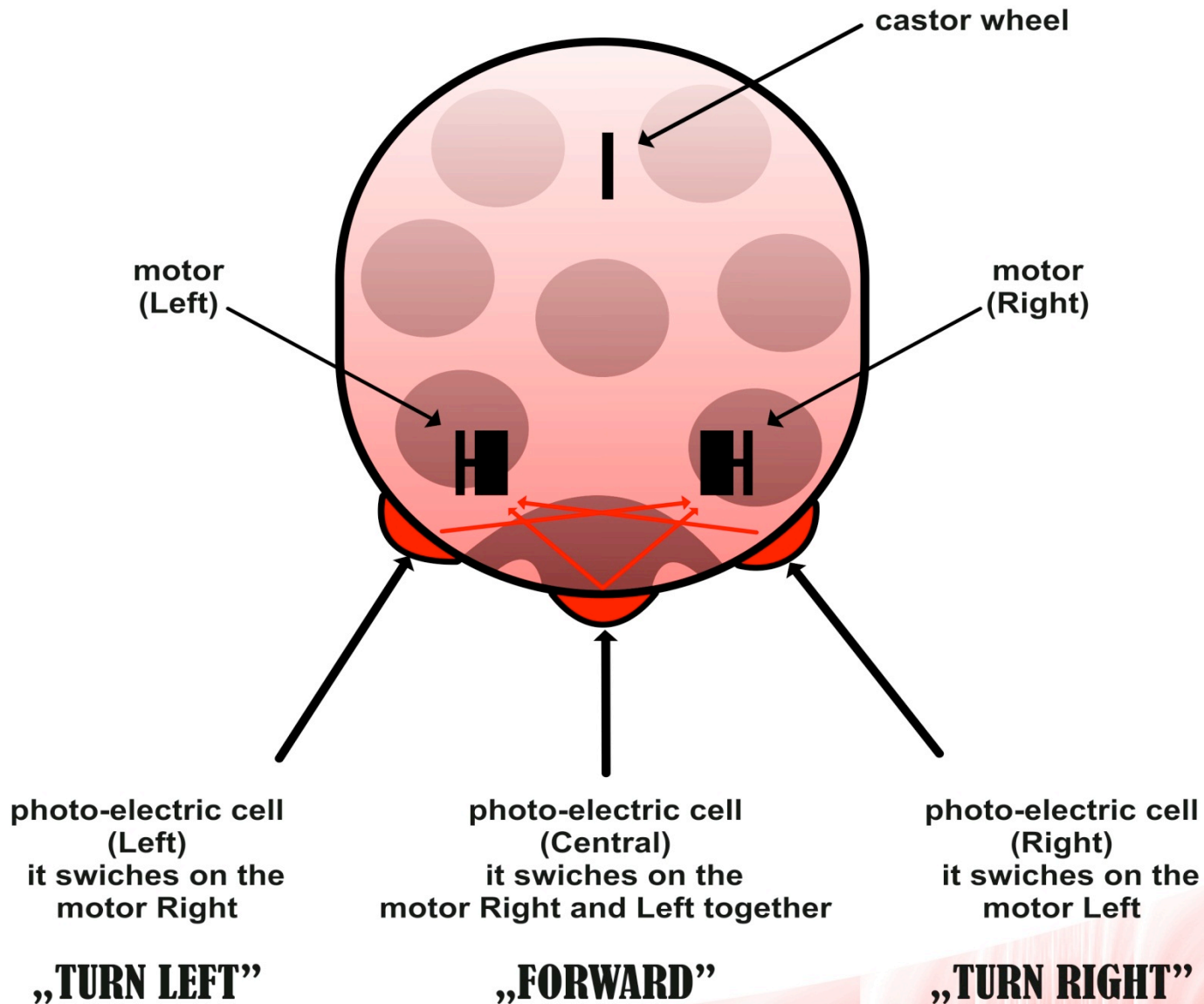






# How does the Ladybird work?

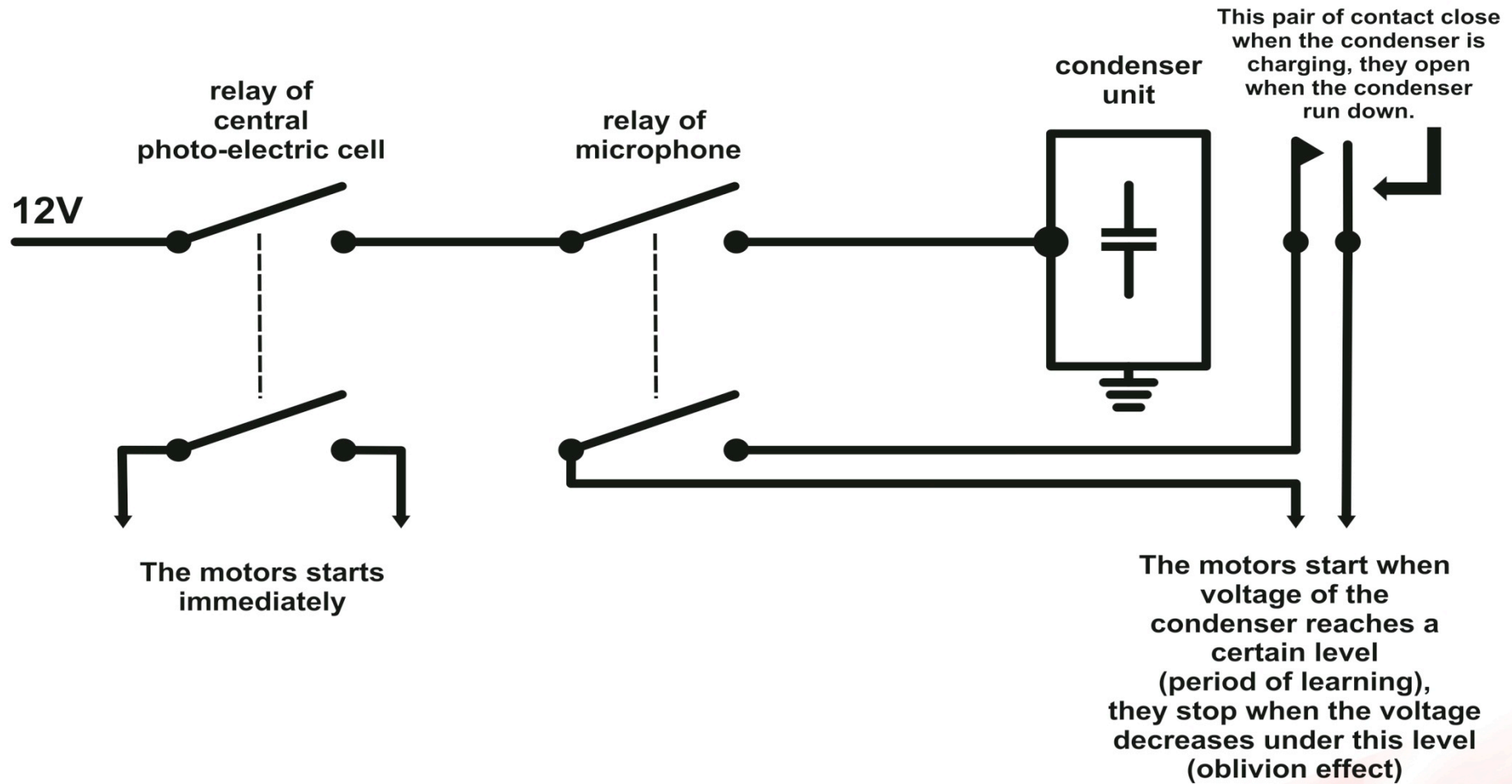
## 1. Unconditional reflex (photo-tropism)



# How does the Ladybird work?



## 2. Conditional reflex



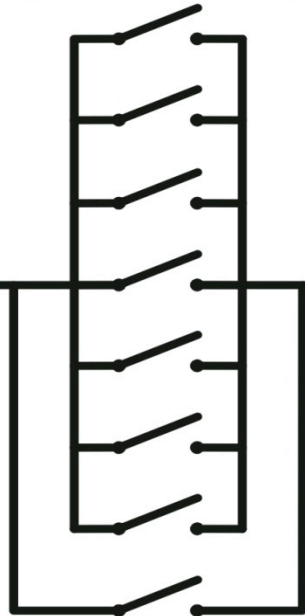


# How does the Ladybird work?

## 3. Defensive reflex

**touch  
bump:**

dots  
(close contact)



horn

- it switches off the current for important electric circuit,
- it switches on the hiss generator

Relay unit



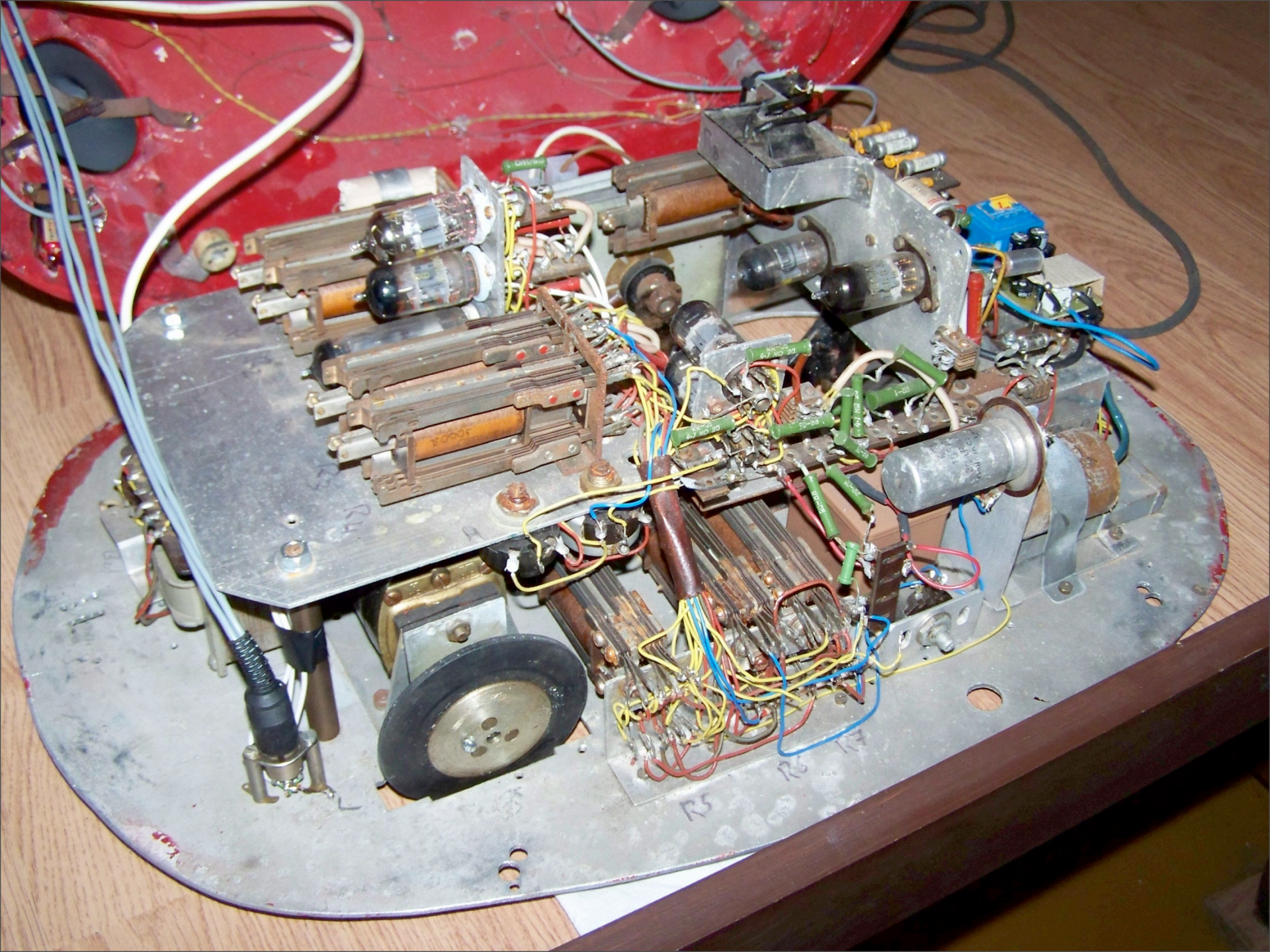
contact on  
the back  
(open)



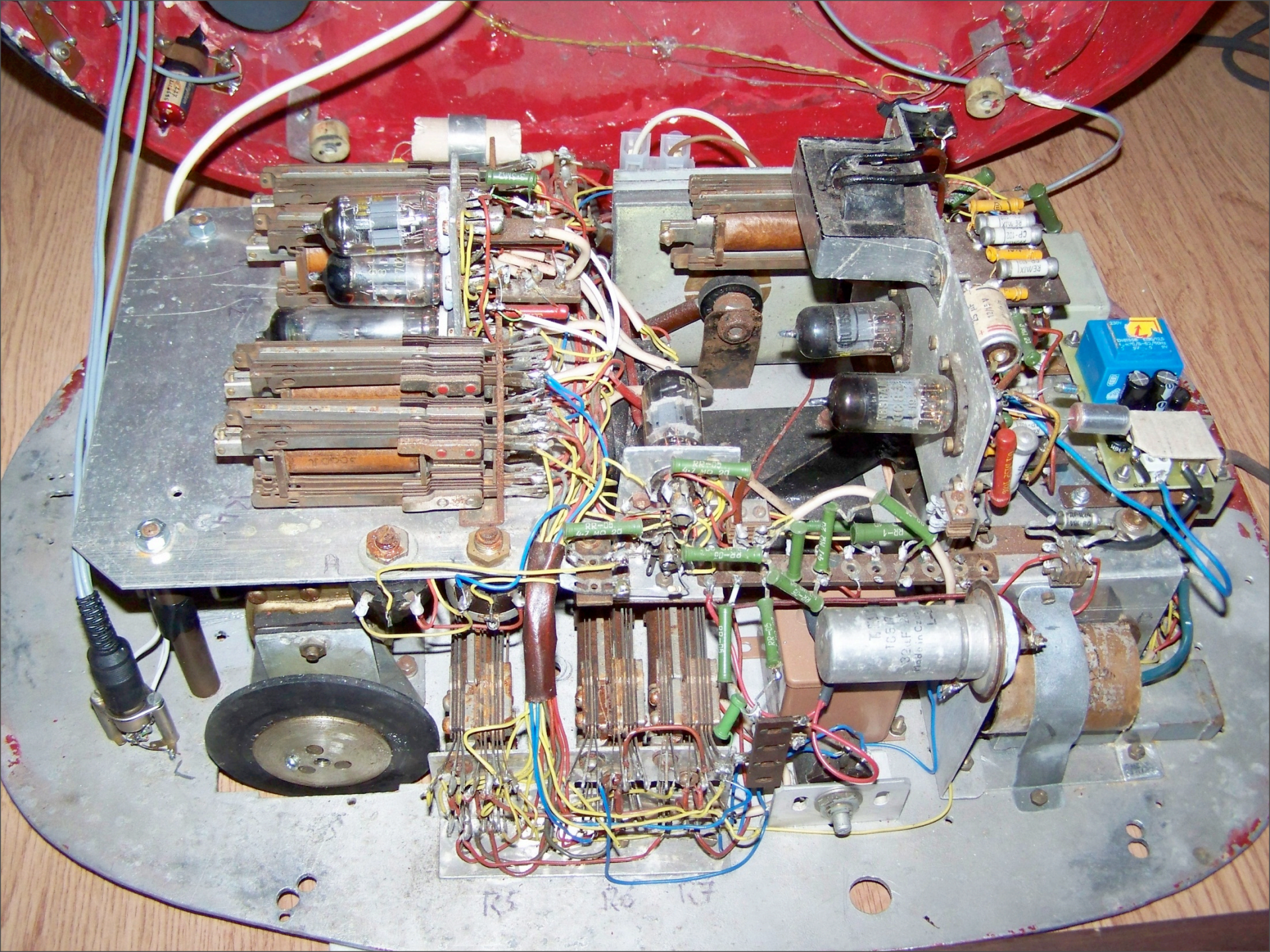
**caress on  
the back:**

- it switches on the eyes,
- it switches off the hiss,
- it switches on the current for all

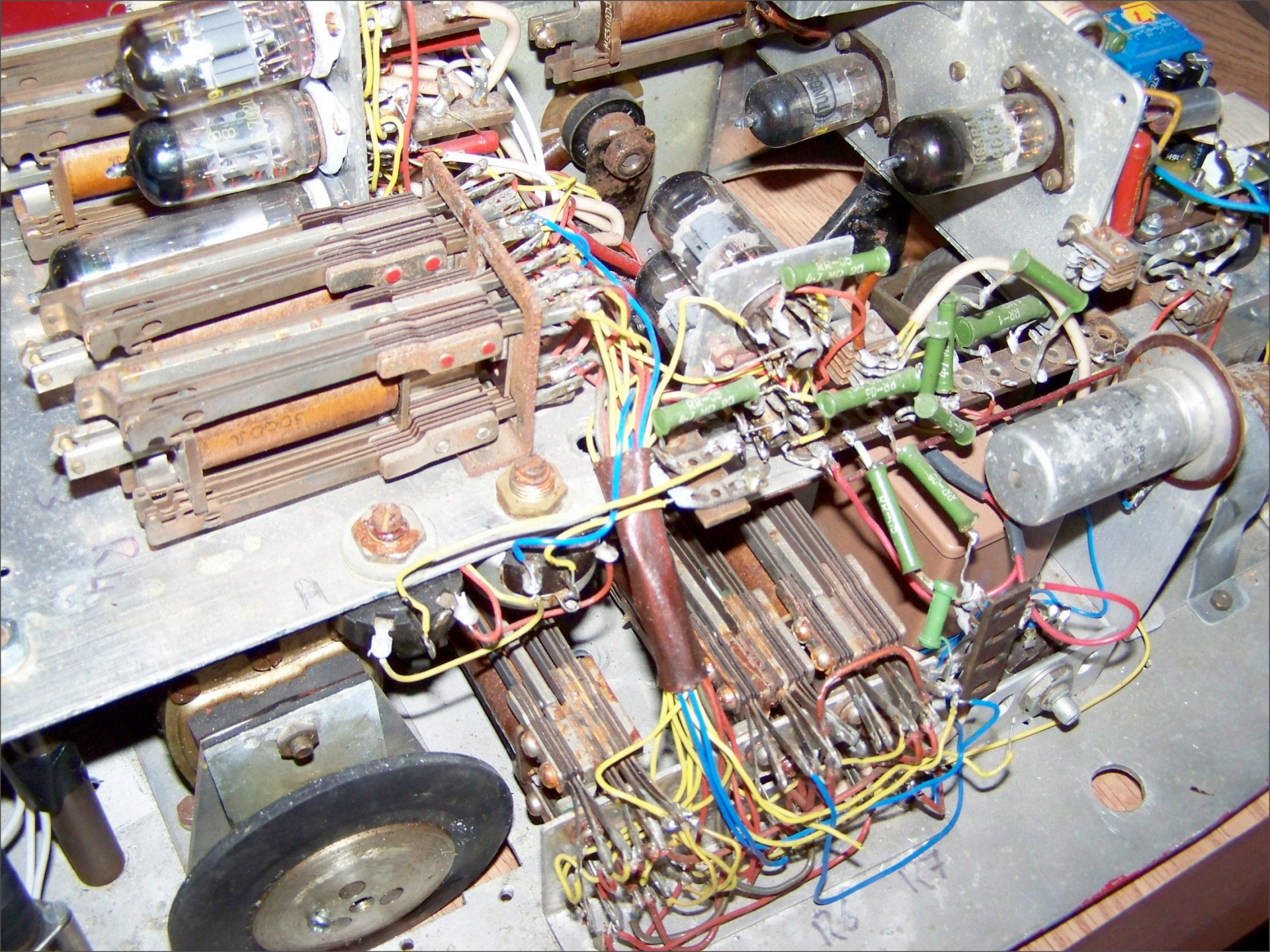




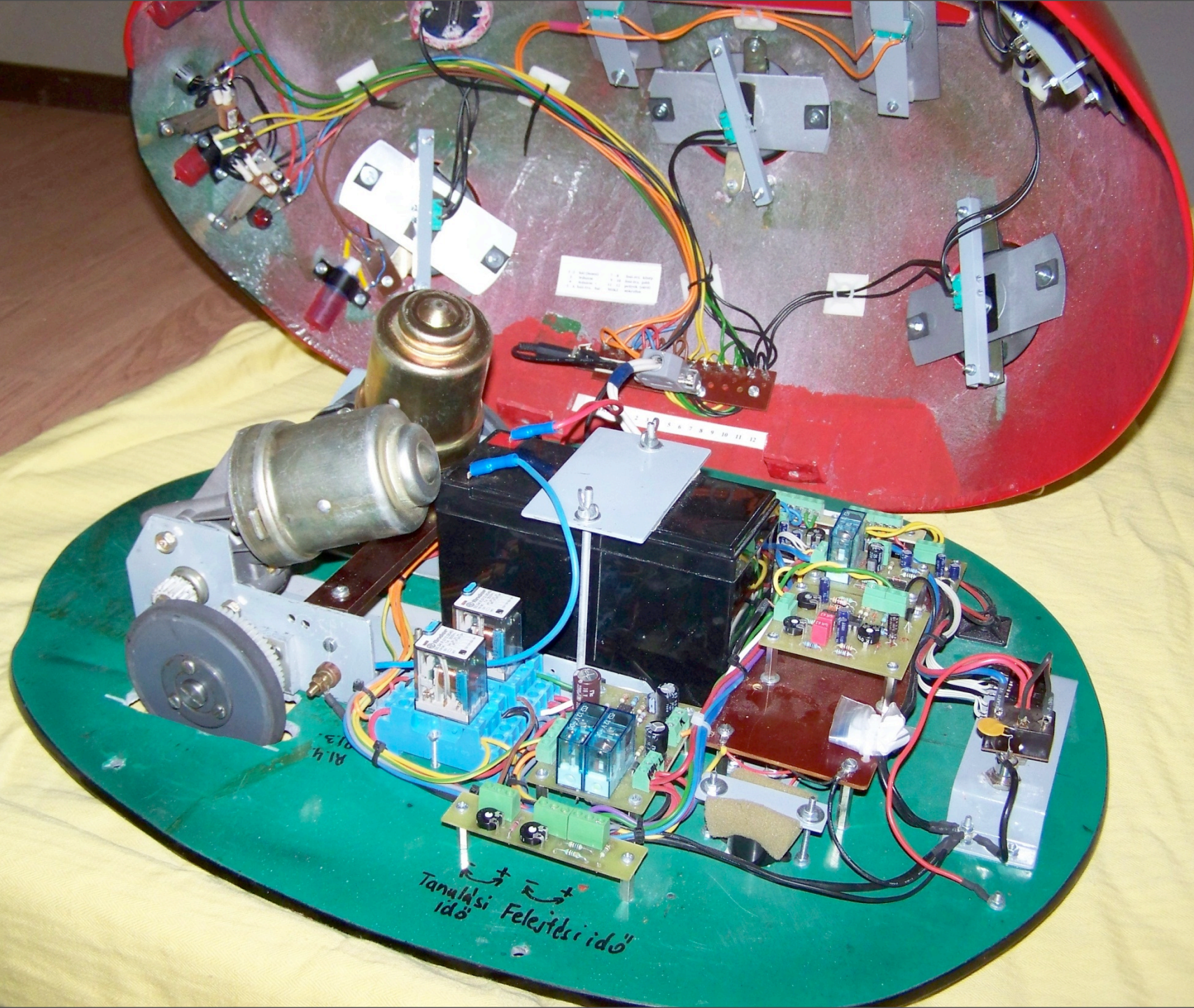






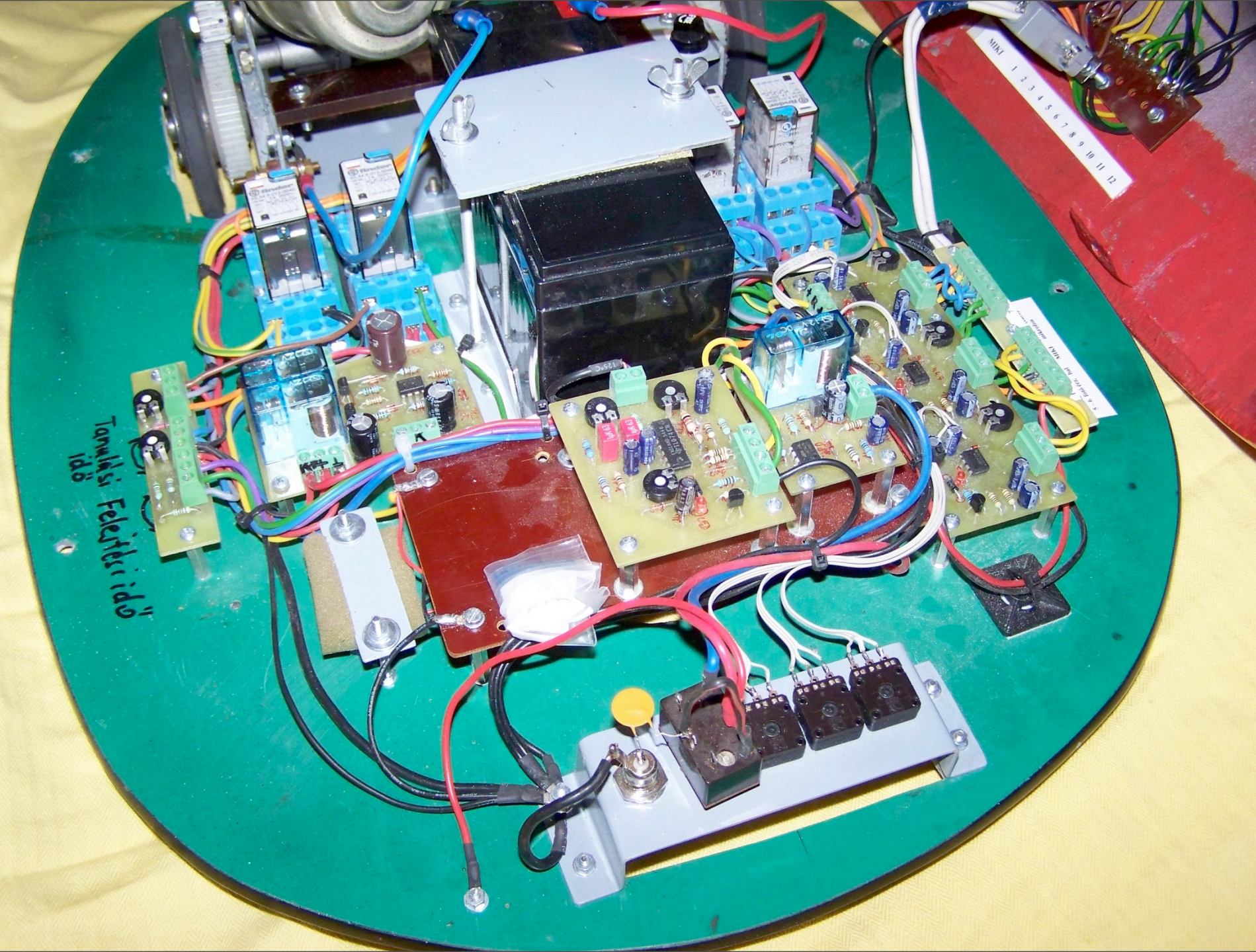






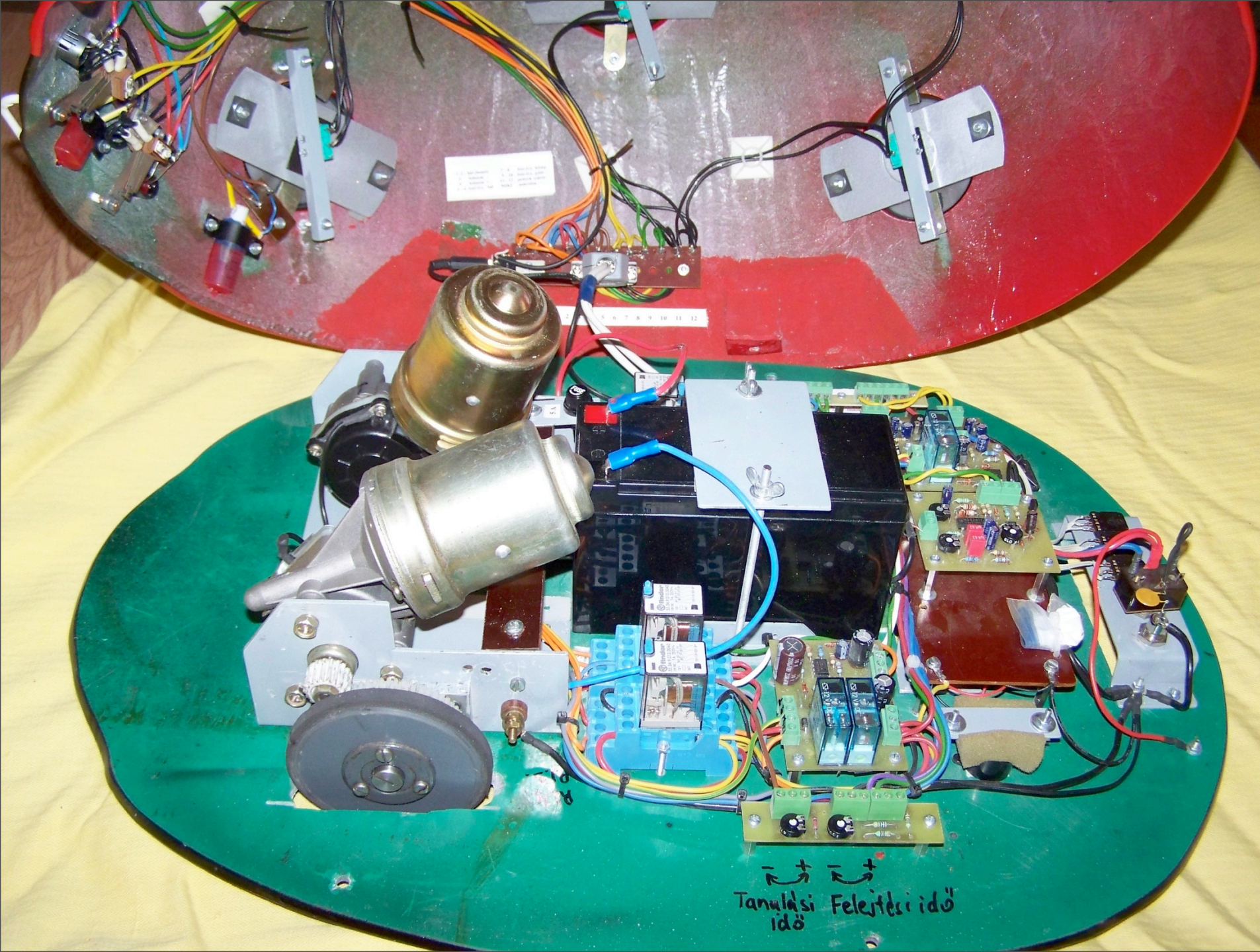
Tanulási idő  
Felejtési idő





TANULÁSI FELÉRTÉSI IDŐ





Tanulási Felejtési idő